

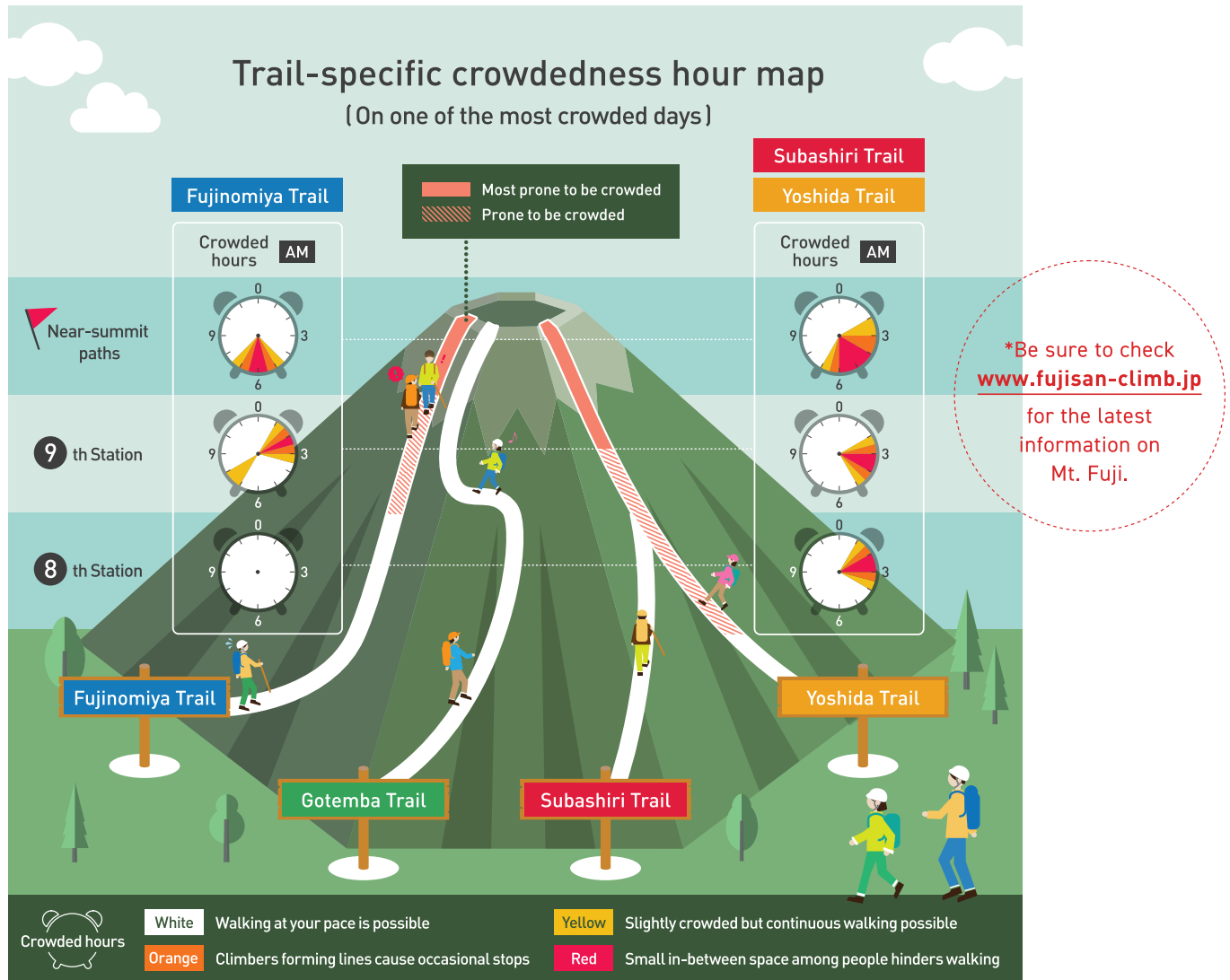
# Avoid crowded hours

There are many sunrise viewers, and they start their climbing in the midnight darkness. As a result, hours from three to five in the morning above the eighth station present a congestion peak you should avoid.

Even from various locations on Yoshida and Gotemba Trails – instead of the summit – you can enjoy a magnificent sunrise.

A safer and relaxed way is to welcome the sun's arrival at a hut and to conquer the apex later!

A brilliant sunrise seen from a mountain hut (around the eighth station).



## Yoshida Trail

Featuring many mountain huts, it's the best route for beginners and used by the majority of climbers. It provides sunrise viewing from any location. Extremely crowded beyond the eighth station in sunrise hours.

## Subashiri Trail

A greenery-rich course thanks to a forest zone. Sunrise is also viewable anywhere outside forests. A less crowded course until Yoshida Trail joins at the eighth station.

## Gotemba Trail

With a longer distance and a fewer mountain huts, the trail is for experienced climbers. Not crowded at any hours, and also sunrise viewing is available at any location on the course.

## Fujinomiya Trail

The shortest course starting at a higher elevation than other courses and used by many beginners. Located on the south, it provides sunrise viewing only above the new seventh station. Except crowding at a near-summit area just before/after the sunrise, there's no significant congestion.

### Contact

Fujisan World Cultural Heritage Council  
[www.fujisan-3776.jp](http://www.fujisan-3776.jp)

### Yamanashi Prefecture Office

Fujisan World Heritage Division, Resident Affairs Department,  
Yamanashi Prefectural Government 1-6-1 Marunouchi,  
Kofu City, Yamanashi Prefecture 400-8501  
Tel: 055-223-1330 / Fax: 055-223-1781  
[fujisan-hz@pref.yamanashi.lg.jp](mailto:fujisan-hz@pref.yamanashi.lg.jp)

### Shizuoka Prefecture Office

World Heritage Division, Culture and Tourism Department,  
Shizuoka Prefectural Government 9-6 Ote-machi,  
Aoi-ku, Shizuoka City, Shizuoka Prefecture 420-8601  
Tel: 054-221-3746 / Fax: 054-221-3757  
[sekai@pref.shizuoka.lg.jp](mailto:sekai@pref.shizuoka.lg.jp)